

Instructions for use

Window shade for Innova® S44i
English (EN)

This instruction complements the operating manual for the Innova S44i and does not replace it. Therefore, please also read the operating manual before installing the window shade. You can find the current version of the operating manual on the Internet at www.eppendorf.com/manuals.

1 Product description

1.1 Features

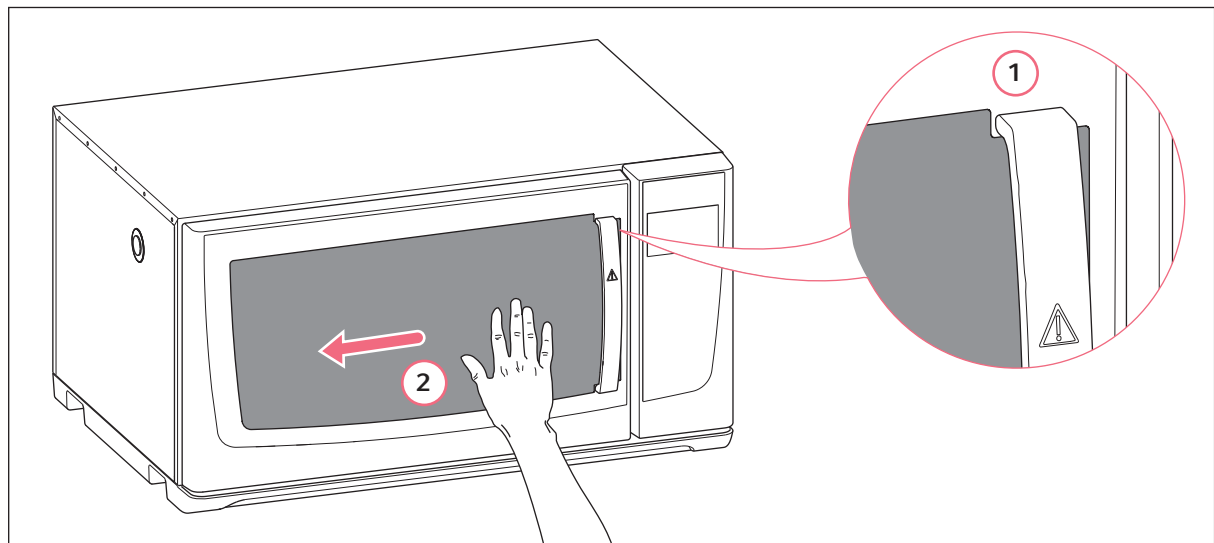
The window shade protects the chamber from external light. To look into the chamber you can simply lift off the window shade. The window shade can be removed and replaced.

1.2 Delivery package

1	Window shade
2	Self-adhesive strips

2 Installation

2.1 Installing the window shade



1 Cut-out of the window shade

2 Securing the window shade with your hand

Auxiliary equipment

- Window glass cleaner

1. Clean the window glass with glass cleaner.
2. Remove the paper from the back side of the self-adhesive strips. Attach the self-adhesive strips to the back side of the window shade.

The back sides of the strips are self-adhesive.

Instructions for use

Window shade for Innova® S44i
English (EN)

3. Position the cut-out of the window shade under the door handle. Keep the self-adhesive strips away from the window.
4. Place the window shade on the window so that no external light can enter the chamber.
5. Attach the window shade to the window with the self-adhesive strips. Move your hand from right to left applying light pressure.
6. If the self-adhesive strips do not stick to the window, use the provided spare self-adhesive strips to attach the window shade to the device.



To ensure proper adhesion of the self-adhesive strips, wait 1 hour before removing the window shade.

3 Operation

The window shade can be attached and removed. To look at the samples without opening the door, you can remove the window shade.

Remove the window shade

- ▶ Pull off the window shade from left to right, so that the contact points of the self-adhesive strips come off.

Reuse the window shade

- ▶ Place the window shade on the window so that no external light can enter the chamber.
- ▶ To secure the window shade, line up the self-adhesive strips with the contact points. Move your hand from right to left applying light pressure.

4 Removing the self-adhesive strips

- ▶ To remove the self-adhesive strips from the glue points on the window, slowly pull the tab.
The self-adhesive strips are not reusable.

5 Ordering information

Order no. (International)	Description
S44I042002	Window shade Innova S44i

Your local distributor: www.eppendorf.com/contact
Eppendorf AG · Barkhausenweg 1 · 22339 Hamburg · Germany
eppendorf@eppendorf.com · www.eppendorf.com