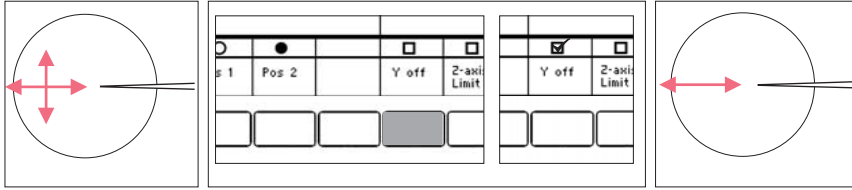
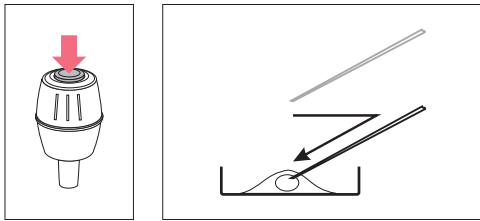


### 11. Use of the Y off - function

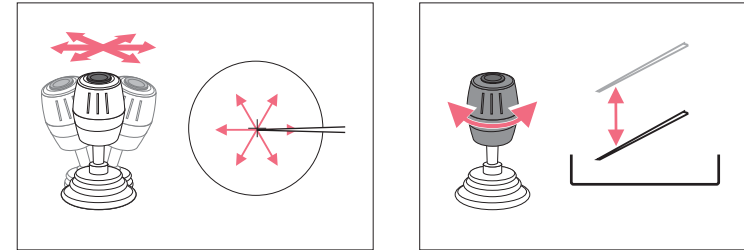


### 12. Use of the Inject-function (Settings: Z-axis Limit, Joystick key = Inject)

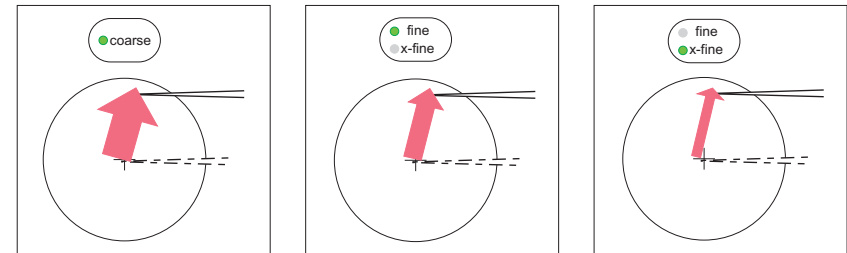


**!** These short instructions are a supplement to the operation manual and not a substitute. Read the operating manual before using the micromanipulator for the first time!

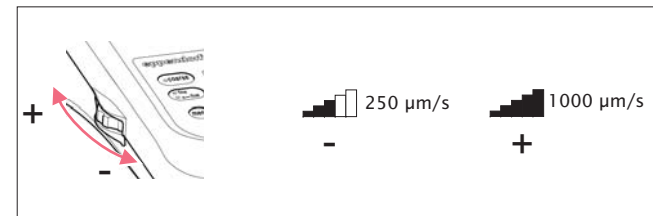
### 1. Movement control via joystick



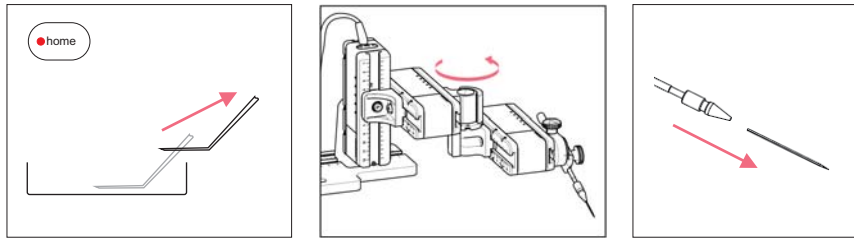
### 2. Speed settings using keys



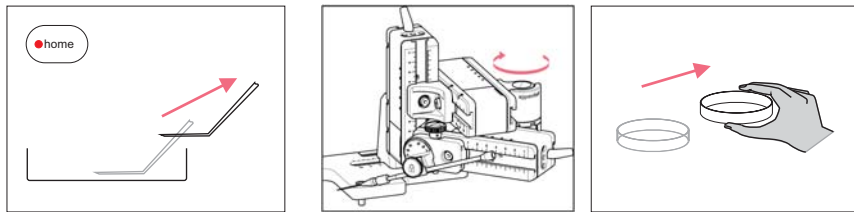
### 3. Speed area adjustment using wheel



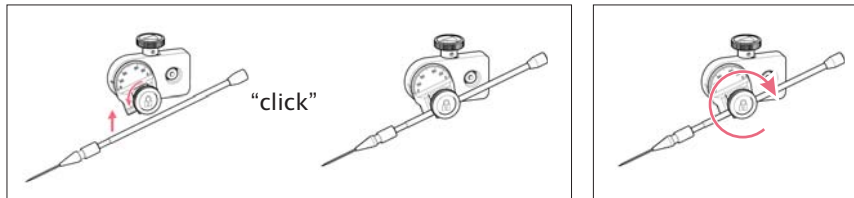
4. Capillary exchange by pressing home



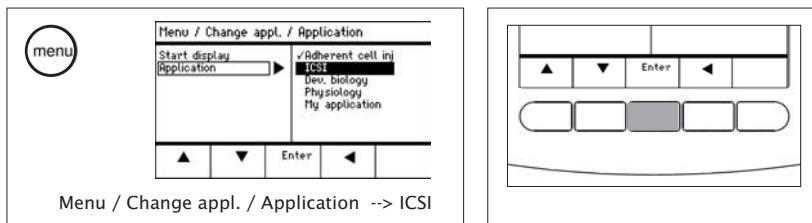
5. Sample exchange by pressing home



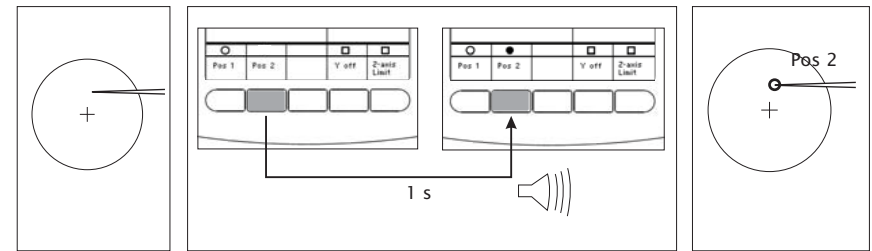
6. Mounting and fixing the capillary holder



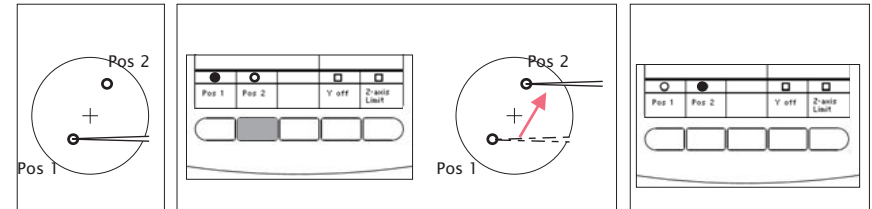
7. Change the application via menu



8. Save the position by pressing softkey (1 s)



9. Go to positions by softkey



10. Go to positions by joystick key (Joystick key = Switch position)

