



epMotion® Editor

Installation guide

eppendorf

Copyright© 2012 Eppendorf AG, Hamburg. No part of this publication may be reproduced without the prior permission of the copyright owner.

epMotion® and eppendorf® are registered trademarks of Eppendorf AG, Hamburg, Germany.

Table of contents

1	Warranty and liability	4
2	Directory structure	5
3	System requirements	6
4	Installation	7
4.1	Install software	7
4.2	Starting the epMotion Editor for the first time	7
5	Troubleshooting	10

1 Warranty and liability

Our software is produced with the highest degree of care and attention according to the current state of technology.

You should only use software that has been tested and approved by Eppendorf AG. Eppendorf guarantees that at the time of shipping, the data carrier and accompanying documentation are fully functional and complete.

If either the data carrier or the accompanying documentation is found to contain errors, the license shall be entitled to receive a replacement within a warranty period of 12 months.

Claims above and beyond the foregoing are expressly rejected.



By installing epMotion Editor and its associated components, you indicate your acceptance of the accompanying license agreement!

2 Directory structure

You will find the following directories and content on the CD-ROM:

\Manuals	Software manual "epMotion® Editor"
\Software	epMotion Editor

3 System requirements

The epMotion Editor requires the following hardware and software on your PC.

Hardware

- Pentium III 1.0 GHz or higher
- > 512 MB RAM
- > 1 GByte available hard disk space
- 17" monitor with a resolution of 1280 x 1024 or higher
- USB port for the MultiMediaCard (MMC™) card reader
- USB port for the Editor key

Software

- Microsoft® Windows XP (32-Bit) with Service Pack 2 or higher or
- Microsoft® Windows Vista (32-Bit or 64-Bit) or
- Microsoft® Windows 7 (32-Bit or 64-Bit)

A USB card reader and a configured MultiMediaCard (MMC™) are delivered with the epMotion. For installing this device, follow the instructions in the appropriate software installation manual. The USB card reader will appear as "removable media" in the computer's directory tree.

4 Installation

4.1 Install software

To install epMotion Editor software on a PC, proceed as follows:

1. Make sure that all other Windows programs are closed.
2. Insert the installation CD-ROM into the CD drive. If the Autostart function is active on your PC, the installation will start automatically. Otherwise, start *Setup.exe* from the CD.

The installation wizard will guide you through the setup process step by step.



If you update from an older software version, the PC must be restarted after setup. The epMotion Editor software is now installed on the PC.

4.2 Starting the epMotion Editor for the first time

The epMotion Editor requires access to labware specification and configuration files. On delivery of the Workstation, these specification files are stored in the epMotion memory.



In order to adapt the labware to your requirements, Eppendorf offers to check your system and to add new labware specification files to the scope of available labware. Please contact Eppendorf for details.

4 Installation

To use the epMotion Editor, the specification and configuration files must first be transferred to the MMC™. Then the location of this directory on the MMC™ must be configured in the epMotion Editor in order to make the files available.

Transferring the labware specification and configuration files to the MMC™

To transfer the labware specification and configuration files from the Workstation to the MMC™, proceed as follows:

1. Insert the MMC™ into the slot on the right side of the Workstation control panel.
2. At the control panel, carry out a data backup to transfer the data to the MMC™, as described in the Software section of the epMotion Manual.

The labware specification and configuration files are now stored in the "top" directory on the MMC™.

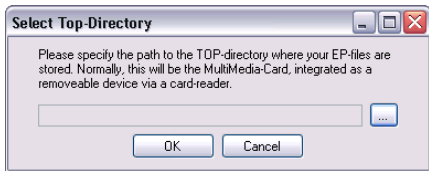
Making the labware specification and configuration files available


To make the labware specification and configuration files available in the epMotion Editor on the PC, proceed as follows:

1. Make sure that the Editor key is connected to a USB port of your PC.
2. Connect the USB card reader for the MMC™ to another USB port.
3. Insert the MMC™ into the USB card reader.
4. In the Windows Start menu, select **Start - Programs - Eppendorf - epMotion Editor** to start the epMotion Editor.

4 Installation

The epMotion Editor starts, and the window **Select Top-Directory** indicates that the "top" directory containing the specification and configuration files has to be defined.



5. Click on the button  on the right.
A file system window is opened.
6. Select the drive to which the MMC™ is connected, e.g. drive "E" and then select the top directory on the MMC™.
7. Click on **OK**.
The window **Select Top-Directory** is displayed.
8. Click on **OK**.
The "top" directory is now configured, and the labware configuration specification files are available in the epMotion Editor.



Only files located in the specified "top" directory will be available for use in the epMotion Editor.

5 Troubleshooting

Error	Cause	Solution
Program doesn't start correctly.	Removable media device not connected / active.	<ul style="list-style-type: none">▶ Check the connection to the removable media device.▶ Remove connections and reconnect them. Removable media device must appear in the Explorer tree.
	MMC is defective or not loaded.	<ul style="list-style-type: none">▶ Check MMC.▶ Insert MMC into the removable media device again.▶ MMC and top file must appear in the Explorer tree.
	Top file can't be found.	<ul style="list-style-type: none">▶ Repeat backup to MMC on the epMotion workstation.



eppendorf

Your local distributor: www.eppendorf.com/worldwide

Eppendorf AG · 22331 Hamburg · Germany · Tel: +49 40 53801-0 · Fax: +49 40 538 01-556 · E-mail: eppendorf@eppendorf.com

Eppendorf North America, Inc. · 102 Motor Parkway · Hauppauge, N.Y. 11788-5178 · USA

Tel: +1 516 334 7500 · Toll free phone: +1 800-645-3050 · Fax: +1 516 334 7506 · E-mail: info@eppendorf.com

Application Support Europe: Tel: +49 1803 666 789 (Preis je nach Tarif im Ausland; 9 ct/min aus dem dt. Festnetz; Mobilfunkhöchstpreis 42 ct/min)
support@eppendorf.com

North America: Tel: +1 800 645 3050 · E-mail: techserv@eppendorf.com

Asia Pacific: Tel: +60 3 8023 6869 · E-mail: support_asiapacific@eppendorf.com